

# DuPont™ Asana® XL

insecticide

## Cutworm control in corn

Don't let cutworms cut into your profits this year. Control them with Asana® XL insecticide from DuPont.

Asana® XL provides longer-lasting control of cutworms and other pests, which means fewer applications per season. And with its unique cottonseed oil (CSO) formulation, Asana® XL resists washoff and provides superior UV stability — even under intense sunlight.

### The benefits of Asana® XL for cutworm control

#### Proven, economical control

- Outstanding control for use in corn and soybeans.
- Very competitive or lower cost alternative to other cutworm control options.

#### Longer-lasting control

- Asana® XL offers a unique CSO formulation that has repeatedly demonstrated superior wash-off resistance and protection from sunlight breakdown for longer residual control than most other pyrethroids.

#### Use recommendations

##### Here's how it works:

#### Application rate for most labeled pests:

Use 5.8 to 9.6 fluid ounces per acre by air or ground.

**Black cutworm** — Asana® XL may be applied at 3.2 to 9.6 fluid ounces per acre for the control of black cutworm when applied at planting of corn (except California).

#### Package sizes:

Available in 1-gallon jugs or 14- or 110-gallon returnables.

#### Formulation:

Unique long-lasting CSO formulation.

#### Meets your application needs

- Use Asana® XL as a preventive treatment before or at planting in fields that have a higher risk of cutworm infestation, such as high plant-residue fields and no-till. Save a trip across the field by tank mixing Asana® XL with your preemergence herbicide such as DuPont™ Cinch® ATZ herbicide.
- Asana® XL is an excellent choice for postemergence applications in conjunction with a scouting program. Apply alone or in a tank mix with DuPont™ Basis®, Accent® Gold WDG, Steadfast® or other labeled postemergence herbicides.



### In-furrow or T-band application: Asana® XL recommended rates for field corn at planting

Insect	Application rate		Last application (days to harvest)
	Lb ai/A	Fl oz/A	
Cutworm	0.0023 lb ai per 1,000 feet of row	0.45 fl oz per 1,000 feet of row	21

Apply as an in-furrow, T-band or band treatment using a minimum 4-inch band. Use the table below to determine the pounds active ingredient and fluid ounces of Asana® XL applied at 0.0023 pound ai per 1,000 feet of row for various row spacings.

**In furrow applications:** Apply into the seed furrow through spray nozzles, behind the planter furrow openers and in front of the press wheel.

**Banded applications:** Apply at planting as a 4- to 7-inch T-band sprayed across the open seed furrow between the furrow openers and the press wheels or as a band application behind the press wheel.

Apply a minimum spray volume of 3 gallons per acre.

Do not exceed 0.05 pound ai per acre per season as an at-plant application.

Do not apply more than 0.25 pound ai per acre per season including at-planting plus foliar applications of Asana® XL.

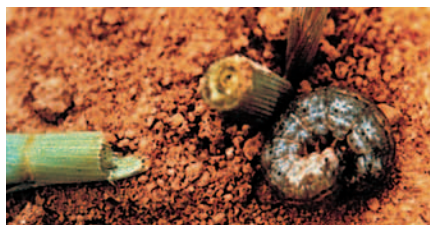
Row Spacing (inches)	40"	38"	36"	30"
Linear ft/A	13,068	13,756	14,520	17,424
Asana® XL lbs ai/A	0.03	0.032	0.033	0.04
Asana® XL fl oz/A	5.8	6.2	6.4	7.8



Black cutworm feeding on corn leaf.

### Scouting for black cutworms

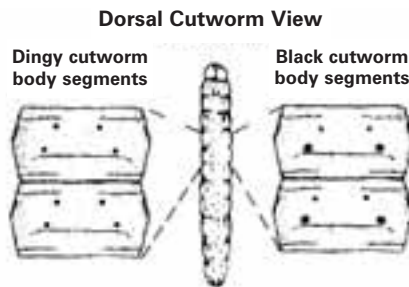
Where leaf-feeding or cut plants are found, dig at the base of damaged plants and look for cutworms. Black cutworms will range in color from light gray to black and can be as long as 1 to 2 inches. Black cutworms can be positively identified and distinguished from the dingy cutworm (which feeds on leaves but rarely cuts plants) by comparing the tubercles (black bumps) on their backs. Once feeding has been found and black cutworms positively identified, mark off 100 consecutive plants in a row and count the number of cut plants. Repeat this step in several locations of the field.



Corn seedling cut by black cutworm feeding.

### Treatment threshold

An insecticide application should be made when cutworms are less than ¾ inch long and 2 percent to 3 percent of plants are cut, or when cutworms are longer than 1 inch and 5 percent of plants are cut.



### Black cutworm identification

As illustrated in the diagram above, the two pairs of tubercles on each body segment of the dingy cutworm will be the same size, while the posterior pair will be larger than the anterior pair on the black cutworm.



The images above show the black cutworm (top) compared to the dingy cutworm (bottom).

### For more information

Contact your local DuPont crop protection retailer or DuPont representative to learn more about DuPont™ Asana® XL. And visit us on the Web at [asanaxl.dupont.com](http://asanaxl.dupont.com).

## Protection beyond cutworms

**Asana® XL controls these additional insect pests in popcorn, field corn and seed corn.**

Armyworm (true armyworm)	Flea beetle
Black cutworm (except CA)	Grasshopper
Chinch bug	Japanese beetle (adult) (except CA)
Corn earworm	Oat bird-cherry aphid
Corn leaf aphid	Southwestern corn borer
Corn rootworm (adult control)	Stalk borer
Cutworm	Western bean cutworm
European corn borer	

Asana® XL and Cinch® ATZ are restricted-use pesticides.

*This reference guide is not intended as a substitute for the product label for the products referenced herein. Product labels for the above products contain important precautions, directions for use and product warranty and liability limitations that must be read before using the product. Applicators must be in possession of the product label(s) at the time of application. Always read and follow all label directions and precautions for use when using any pesticide alone or in tank mix combinations.*

*The DuPont Oval Logo, DuPont™, The miracles of science™, Accent®, Asana®, Basis®, Cinch® and Steadfast® are trademarks or registered trademarks of DuPont or its affiliates.*

*Copyright © 2001-2006 E.I. du Pont de Nemours and Company. All Rights Reserved. 5/06  
Reorder No.: K-14384 (Replaces K-06243).*



*The miracles of science™*