

DAMAGE

STINK BUG DAMAGE



Feeding callus on boll wall

Feeding damage to developing seed



Stink bug boll loss on field bordering with peanuts

PLANT BUG — FLEAHOPPER DAMAGE TO SQUARES AND BLOOMS



"Blasted" pinhead square from plant bug feeding



Feeding damage to pre-bloom square



"Dirty bloom" following plant bug/fleahopper feeding on pre-bloom square

CONTROL

STINK BUG CONTROL

DuPont Insecticide Use Rates

(See label for complete directions for use)

Green and Southern Green Stink Bugs

- Asana® XL alone at 8.0 fl oz/A (.04 lb ai) (1 gal treats 16 acres) (except California)

Brown, Green and Southern Green Stink Bugs

- Vydate® C-LV alone at 10.7-17 fl oz/A (0.3-0.5 lb ai) (1 gal treats 12-8 acres)
- Vydate® C-LV at 10.7 fl oz/A (1 gal treats 12 acres) + Asana® XL* at 7.0 fl oz/A (1 gal treats 18 acres)

* Asana® XL is not labeled for brown stink bug and is not labeled in CA for green or southern green stink bug.

PLANT BUG — COTTON FLEAHOPPER CONTROL

DuPont Insecticide Use Rates

(See label for complete directions for use)

Tarnished Plant Bug and Cotton Fleahopper

- Vydate® C-LV alone at 10.7-17 fl oz/A (1 gal treats 12-8 acres)
- Steward® EC alone at 9.2-11.3 fl oz/A (1 gal treats 14-12 acres)
- Asana® XL alone at 8.0 fl oz/A (1 gal treats 16 acres)

Combinations

- Vydate® C-LV at 10.7 fl oz/A (1 gal treats 12 acres) + Asana® XL at 7.0 fl oz/A (1 gal treats 18 acres)
- Steward® EC at 9.2-11.3 fl oz/A (1 gal treats 14-12 acres) + Asana® XL at 7.0 fl oz/A (1 gal treats 18 acres)
- Steward® EC at 9.2-11.3 fl oz/A (1 gal treats 14-12 acres) + Vydate® C-LV at 10.7 fl oz/A (1 gal treats 12 acres)

Asana® XL and Vydate® C-LV are restricted-use pesticides.

This reference guide is not intended as a substitute for the product label for the product(s) referenced herein. Product labels for the above product(s) contain important precautions, directions for use and product warranty and liability limitations that must be read before using the product. Applicators must be in possession of the product label(s) at the time of application. Always read and follow all label directions and precautions for use.

The DuPont Oval Logo, DuPont™, The miracles of science™, Asana®, Steward® and Vydate® are trademarks or registered trademarks of DuPont or its affiliates.

Copyright © 2002-2009 E.I. du Pont de Nemours and Company. All Rights Reserved. 1/09 Reorder No.: K-15039 (Replaces K-05832)



The miracles of science™



The miracles of science™



Who's Bugging You?

Identification Guide to Adult and Immature Plant Bug and Stink Bug Pests in the Midsouth, Southeast and Texas Cotton

BUGS

BROWN STINK BUG (*Euschistus servus*)

Adult



Nymph



Ottens, Russell J. University of Georgia. <http://www.ipmimages.org/>.

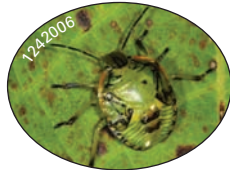
- Broadly pointed “shoulders”
- “Beak” or proboscis extends between 3rd set of legs
- “Beak” is always thin, flat and with four segments
- Brown body with light green underside
- No spots or stripes on abdomen

GREEN STINK BUG (*Acrosternum hilare*)

Adult



Nymph



Susan E. Ellis © 2005 used with permission. <http://www.ipmimages.org/>.

Ottens, Russell J. University of Georgia. <http://www.ipmimages.org/>.

Black bands on antennal segments

Black-and-white striped upper abdomen

SOUTHERN GREEN STINK BUG (*Nezara viridula*)

Adult



Nymph



Ottens, Russell J. University of Georgia. <http://www.ipmimages.org/>.

Reddish bands on antennal segments

White spots on upper abdomen

TARNISHED PLANT BUG (*Lygus lineolaris*)

Adult



Nymph



- Head narrower than thorax
- Body striped light green, tan to nearly black with age
- Lime green body with 5 black spots on thorax and abdomen

CLOUDED PLANT BUG (*Neurocolpus nubilus*)

Adult



Nymph



Smith, Ronald. Auburn University. <http://www.ipmimages.org/>.

- Base antennal segments large
- Antennae with alternating black and white bands
- 1st segment of hind leg larger than front or middle legs
- Antennae and legs with alternating red and white bands in early instars
- Changing to black and white bands in late instars and pre-adults

CREONTIADES PLANT BUG (*Creontiades sp.*)

Adult



Daniel D. Fromme
Texas A&M University,
Cooperative Extension Service

- Small dark spot at the base of the scutellum
- Antennae longer than the body length
- Reddish band at the base of the pronotum
- Red eyes

COTTON FLEAHOPPER (*Pseudatomoscelis seriatus*)

Adult



Nymph



Smith, James. Mississippi State University. <http://www.ipmimages.org/>.

- Pale green body with small black spots
- Head narrower than thorax
- Lime green body with “dusty” appearance

WHITE STRIPED LEAF FOOTED BUG (*Leptoglossus clypealis*)

Adult



- Flat “leaf footed” segment of hind leg
- Prominent white cross stripe in adults
- Bright orange antennal tips

Brown, Steve M. University of Georgia, Cooperative Extension Service

DUPONT INSECTICIDE CHECKLIST

See “control” section on back for application rates.

	Asana® XL insecticide	Vydate® C-LV insecticide/ nematicide	Steward® EC insecticide
Stink Bugs			
Brown		✓	
Green	✓*	✓	
Southern	✓*	✓	
Plant Bugs			
Tarnished	✓	✓	✓
Clouded	✓		
Creontiades	✓		
Cotton Fleahopper	✓	✓	✓

*except CA