

Recommendation Sheet

Almond, Pistachio, Walnut, Pecan and Filberts (Tree Nut crop group) — California and Arizona

DuPont™ Altacor®

insect control

powered by
RYNAXYPYR®

Provides reliable and consistent control of key pests in tree nuts

DuPont™ Altacor® insect control is a breakthrough mode of action insecticide that delivers remarkable protection and is registered by EPA as a Reduced Risk product. When used early in the pest life cycle, Altacor® prevents the buildup of pest populations, maximizing your yield potential.

Key Benefits of Altacor®:

- Breakthrough mode of action (Group 28 insecticide)
- Excellent environmental profile and registered by EPA as a Reduced Risk product
- Shortest re-entry interval available — 4 hours
- Short 10-day pre-harvest interval
- No bee label statement
- No mite or aphid flaring
- Exceptional and long-lasting control of key lepidopteran pests such as:
 - Codling moth
 - Oriental fruit moth
 - Navel orangeworm
 - Peach twig borer
 - Oblique banded leaf roller
- Excellent crop protection — insects stop feeding in minutes
- Flexibility in application timing. Foliar applications give control through:
 - Ingestion
 - Contact
 - Ovicidal activity on specific species (codling moth)
 - Ovi-larvicidal activity on all registered Lepidoptera species
- Minimal impact on beneficials, excellent fit with IPM programs
- No signal word
- Excellent spray-tank stability under a wide range of pH 1-9
- Application rate is 3.0 to 4.5 ounces product per acre for most pests.
- Registered for ground and air applications.



DuPont™ Altacor® insect control

Active ingredient name: DuPont™ Rynaxypyr®

Chemical class: IRAC Group 28, anthranilic diamide

PHI: 10 Days

REI: 4 Hours

No label signal word

Formulation and packaging: 35% water dispersible granule in 16-ounce container. 8 containers per case.

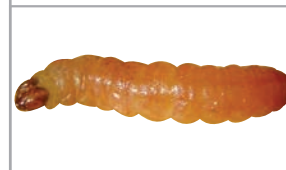
Codling moth



Navel orangeworm
Photo by Jack Kelly Clark

Obliquebanded leafroller

Photo by Jack Kelly Clark



Oriental fruit moth

Peach twig borer



**DuPont™ Altacor® insect control
Tree Nut Insecticide Crop Timing Recommendations:**



Crop Timing	Crop and Pest	Product Recommendations
Dormant and delayed dormant	Almonds — Peach twig borer	Altacor® applied at 3-4.5 oz product/A alone or in combination for peach twig borer and obliquebanded leafroller Use appropriate EPA-registered dormant oil for overwintering generation of peach twig borer. The high rate is recommended for applications made at early- to mid-dormant timing.
Bloom and petal fall	Almonds — Peach twig borer	Altacor® applied at 3-4.5 oz product/A (no bee statement, strong residual)
May spray	Almonds and Pistachios — Peach twig borer, navel orangeworm, Oriental fruit moth	Altacor® applied at 3-4.5 oz product/A (no mite flaring, strong residual)
Cover spray	Walnuts — Codling moth, navel orangeworm, Oriental fruit moth	Altacor® applied at 3-4.5 oz product/A. Make initial application at or before peak egg lay for targeted generation. Depending on level of infestation, make sequential applications 14-21 days later as needed. Use higher rate under high insect pressure. Thorough spray coverage is important to achieve best results. Maximum water spray volume is 200 gpa.
Hull split	Almonds and Pistachios — Navel orangeworm, peach twig borer, Oriental fruit moth, obliquebanded leafroller	Altacor® applied at 3-4.5 oz product/A. Apply at early hull split (i.e., 2%-5%). Multiple applications may be needed. If multiple applications are needed make additional application 10-14 days later. Use higher rate under high insect pressure. Thorough spray coverage is important to achieve best results.

Do not apply more than 9.0 oz product/acre/season. Make no more than 4 applications per season. Do not make dilute applications of more than 200 GPA per acre. Do not apply less than 100 GPA by ground. Minimum interval between applications is 7 days.

For best results on registered tree nut crops

Use the higher application rate for heavy pest pressure, large trees or dense canopy and foliage. In some situations where coverage is difficult to achieve, the addition of an EPA-approved adjuvant may improve performance. Make applications at 100-150 GPA.

DuPont™ Asana® XL insecticide

Asana® XL is registered for use on almonds, pecans, walnuts and filberts and can be used in combination with Altacor® or as a stand alone in an IPM program for control of key insects.

Crop	Pest	Rate fl oz*	REI	PHI
Almonds	Navel orangeworm, peach twig borer** — dormant and in season	9.6-19.2	12 hours	21 days
Filberts	Filbertworm, obliquebanded leafroller			
Pecans	Hickory shuckworm, pecan aphids, pecan nut casebearer, pecan leaf phylloxera, pecan spittlebug, pecan stem phylloxera, pecan weevil	4.8-14.5		
Walnuts	Codling moth, navel orangeworm, walnut aphid, walnut husk fly	9.6-19.2		

* Concentrate spray applications. ** California only.

Almonds, filberts and walnuts — do not apply more than 0.2 lb ai/acre/season. Pecans — do not apply more than 0.3 lb ai/acre/season.

For more information

Contact your local DuPont crop protection retailer, PCA or DuPont representative for a recommended program for tree nut crops grown in your area. And visit us on the Web at altacor.dupont.com.

Asana® XL is a restricted-use pesticide.

This reference guide is not intended as a substitute for the product label for the product(s) referenced herein. Product labels for the above product(s) contain important precautions, directions for use and product warranty and liability limitations that must be read before using the product. Applicators must be in possession of the product label(s) at the time of application. Always read and follow all label directions and precautions for use when using any pesticide alone or in tank mix combinations.

The DuPont Oval Logo, DuPont™, The miracles of science™, Altacor®, Asana® and Rynaxypyr® are trademarks or registered trademarks of DuPont or its affiliates.

*Copyright © 2009 E.I. du Pont de Nemours and Company. All Rights Reserved. 8/09
Reorder No.: K-15174 (Replaces K-15121)*



The miracles of science™