

DuPont Qualicon BAX[®] System

REVERSE-TRANSCRIPTASE PCR ASSAY FOR *LISTERIA* SPECIES

PRODUCT DESCRIPTION

An automated, DNA-based test that uses PCR to detect *Listeria* with new levels of speed (8 hours) and sensitivity (less than 10 cfu/mL). The easy-to-use, flexible protocol gives you clear, precise results at the end of a shift or even the next day to fit the workflow in your lab, help you take action sooner and release product faster with confidence and peace of mind.



BAX[®] System Reverse-Transcriptase PCR Assay

***Listeria* species**

Part # D14206593

Assay kit for 96 tests:

PCR tubes with tablets, optical caps, dilution buffer, lysing agents.

Store at 2-8°C.

Collection kit for 96 tests:

Collection tubes with DV buffer, environmental swipes.

Store at room temperature.

Stable to expiration date on labels

**Part # D13948944 (120v) or
Part # D13955166 (220v)**

Optional Auxiliary Supplies Package :

Pipettor, stepper and sealing barrier tips, deep well plate and sealing film, vortex mixer, microcentrifuge tube, micro tube rack, micro tube dry block insert.

Benefits of this 8-hour *Listeria* assay

- Speed – Reliable, reproducible results in just 8 hours
- Accuracy – Detects all species of *Listeria*
- Versatility – Runs on both BAX[®] system instruments
- Flexibility – Samples can be refrigerated several days for delayed testing
- Ease of use – Tableted reagents reduce operator error
- Closed-cap system avoids amplicon contamination in the lab
- LIMS-compatible electronic data for easy storage, sharing and retrieval
- Designed for efficient workflow and reliable results

Features

- Short (4 hour) cell resuscitation step eliminates the need for lengthy enrichment
- Unique lysis procedure shortens time to result
- Sensitivity <10 cfu/mL for all species except *L. grayi* at <50 cfu/mL
- Excellent inclusivity and exclusivity

Certifications

- **AOAC Research Institute** Performance Tested MethodSM #030801.

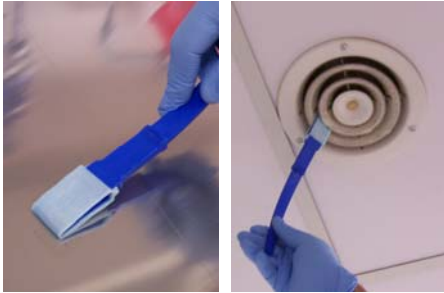


This test kit's performance was reviewed by AOAC Research Institute and was found to perform to the manufacturer's specifications.



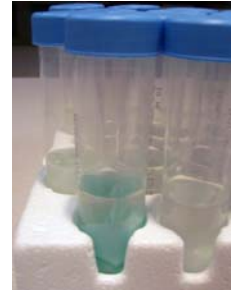
The miracles of science[®]

Sample collection



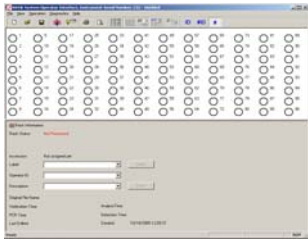
7:45 Remove swipe from packaging and use it to sample 10x10 cm (4x4 inch) surface. Release the wipe in conical tube of DV buffer, making sure wipe is completely submerged (do not vortex). Incubate for 4 hours at 30°C.

Note: If you prefer to hold samples for testing in the morning, chill (2-8°C) the DV buffer before sampling. Add wipes to chilled collection tubes and keep refrigerated until ready to test. Make sure that the samples are in the cyclor and PCR has begun within 72 hours of sampling.



BAX® system protocol*

12:00 Create rack file and warm up cyclor.



12:05 Vortex collection tube at high speed for 5 seconds.



12:06 Add 50 uL Agent 1 to deep-well plates.



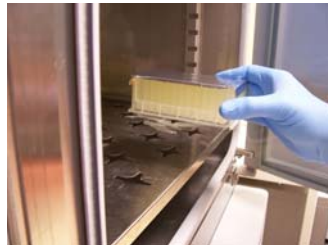
12:11 Transfer 1-mL samples, then add 20 uL Agent 2.



12:20 Cover deep-well plate and vortex briefly at medium speed.



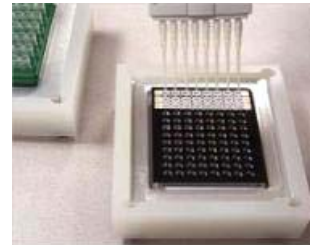
12:25 Heat samples for 35 minutes at 37°C.



1:00 Add 200 uL dilution buffer to cluster tubes in cooling block, then add 10 uL vortexed lysate.



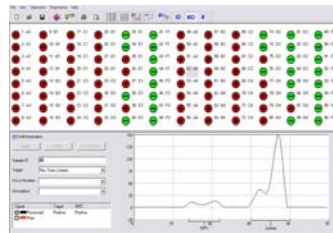
1:10 Transfer 30 uL of diluted lysate to PCR tubes.



1:15 Place sealed PCR tubes in cyclor and run program.



4:15 Review results



DuPont Qualicon
 ESL Bldg 400, PO Box 80400
 Wilmington, DE 19880-0400 USA
 Tel: 800-863-6842 or 302-695-5300
 Fax: 302-695-5301
 Europe: 00 800 3876 6838
 Singapore: +65 6586 3635
 www.qualicon.com

*Shown with deep-well plates. Microcentrifuge tubes may also be used. See package insert for details.

