

DuPont Qualicon BAX[®] System

PCR ASSAY FOR *ENTEROBACTER SAKAZAKII*

PRODUCT DESCRIPTION

Enterobacter sakazakii has been identified by the U.S. Food and Drug Administration as an emerging food-borne pathogen and environmental organism. *E. sakazakii* outbreaks in the last few years have been associated with the consumption of contaminated milk-based powdered infant formula, which is heat-treated, but not sterilized, during production.



BAX[®] System PCR Assay

Enterobacter sakazakii

Part #D17720657 (prev. 17720657)

96 tests per kit

PCR tubes with tablets, optical caps,
protease, lysis buffer

Store at 2-8°C

Stable to expiration date on label

Benefits

- Speed – Next-day results
- Accuracy – Automated DNA-based analysis instead of subjective plate counts
- Exceptional sensitivity – Reliably detects 10⁵ cfu/mL in enriched samples
- Ease of use – Tableted reagents reduce operator error
- Closed-cap system avoids amplicon contamination in the lab
- LIMS-compatible electronic data for easy storage, sharing and retrieval
- Designed for efficient workflow and reliable results

Features

- Results in 3.5 hours processing
- Validation pending for powdered infant formula, dry dairy and soy ingredients and food production environmentals
- Developed in partnership with the Nestle Research Centre
- Specificity 98%
- Excellent inclusivity/exclusivity

Validations and Approvals

- Health Canada
- People's Republic of China AQSIQ



The miracles of science™

Sample preparation



Prepare samples.

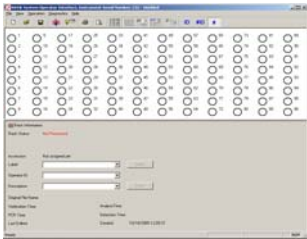
Primary enrichment: Prepare 1:10 dilutions of sample in mLST broth with vancomycin and incubate at 45 ±1°C for 20-22 hours.

Regrowth: Add 10 µL enriched sample to 500 µL BHI and incubate at 37 C for 3 hours .

Step-by-step directions are in the *BAX® System User Guide*, included with purchase.

BAX® system protocol

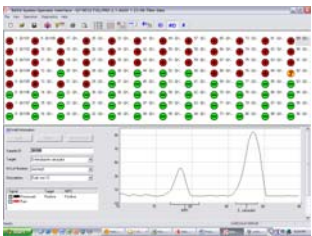
8:00 Create rack file and warm up cycler.



8:20 Heat cluster tubes for 20 minutes at 37°C, then 10 minutes at 95°C.



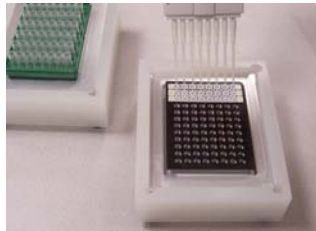
12:30 Review results.



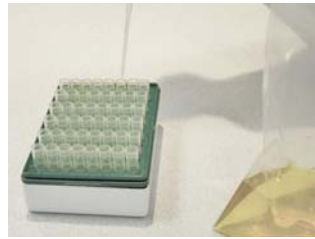
8:05 Mix protease with lysis buffer and transfer 200 µL of lysis reagent to cluster tubes.



8:50 Cool cluster tubes for 5 minutes in cooling block, then transfer 50 uL to PCR tubes in cooling block.



8:10 Transfer 5-µL samples to cluster tubes.



9:00 Place sealed PCR tubes in cycler and run program.



DuPont Qualicon
 ESL Bldg 400, PO Box 80400
 Wilmington, DE 19880-0400 USA
 Tel: 800-863-6842 or 302-695-5300
 Fax: 302-695-5301
 Europe: 00 800 3876 6838
 Singapore: +65 6586 3635
www.qualicon.com

