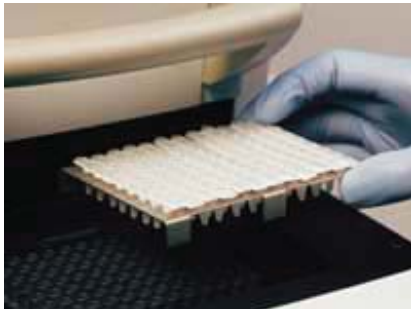


## How the BAX® System Works

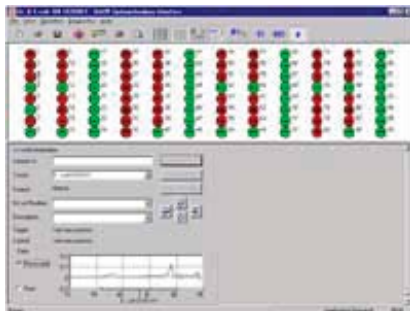
The BAX® system process consists of preparation on enriched samples, followed by automated amplification and detection. These steps use simplified molecular biology techniques and require no additional specialized skills.



Samples are enriched according to standard protocols for the food type. Samples are then heated in a lysis reagent solution to rupture the bacterial cell wall and release the DNA.



PCR tablets, which contain all the reagents necessary for PCR plus fluorescent dye, are hydrated with lysed sample and processed in the cycler/detector. Within a few hours, the polymerase chain reaction (PCR) amplifies a DNA fragment that is specific to the target.



The amplified DNA generates a fluorescent signal, which the BAX® system application uses to analyze the findings. Results are then displayed on your monitor screen as simple positive or negative symbols.